



75 kW, 915 MHz MICROWAVE GENERATOR

Ref: GLP 750 K/SM NUM

This generator uses a switch mode power supply. The numeric electronic control drives simultaneously anodic current, electromagnet (HV) and filament. The result is a very low power setting possibility, maximum efficiency, reduced ripple and increased magnetron life time. The filament soft start function also contributes to increase magnetron life time.



REF	GLP 750 K/SM NUM
Presentation	Power supply and separate head, RF switching power supply ($\eta > 93\%$), length of connecting cable 4 m (possibility up to 20 m)
Frequency	915 MHz \pm 10 MHz or 896 MHz \pm 10 MHz (to be specified)
Output power	Adjustable from 2 to 75 kW
Power stability	Better than 1 % between 5 kW and 75 kW
Ripple	\pm 2 % at full output power
Rise and fall times	100 ms
Microwave output	WR975, flange CPR 975
Display	Forward & reflected powers on LCD screen
Operating mode	Continuous
Maximum SWR	integrated isolator, 30 kW any phase by forward power limitation or stop by fault (choice in menu)
Operation & control	On blue LCD screen 240 x 128
Control mode	Continuous, plasma starting, slope, timer...
Remote control	Analog, RS232, RS485 daisy chaining possible
Mains	380/415 V, 50 Hz or 60 Hz, 3 phase + ground
Consumption	92 kVA at full power
Weight	Power supply 550 kg Power head 90 kg + isolator 140 kg
Cooling	By water, minimum 60 L/min (supply & head). Air/water exchanger inside the head (industrial application).
Safety interlock	Safety relay and free contact to be shunted

CONTROL AND OPERATION OF MICROWAVE GENERATORS WITH NUMERIC DISPLAY

The generators are completely operated in local mode from the control desk located on the front panel of the power supply rack.

You can find the indicator, 3 function buttons and a turn and push system; they allow to entirely control the generator. Please note that the “stop” button physically cuts a safety relay locking the power supply at zero through 2 points. This system, also accessible by the external «interlock » safety, guarantees the safety norm of the system and the staff protection.

Display is realized on blue graphic LCD screen 240 x 128 pixels. All operating and control status, as well as any possible fault, are displayed in clear on the screen. In addition to forward and reflected powers (numeric display and bar graph), the power set point is pre-displayed before starting.

Main operating functions:

Starting mode

- Standard mode ON/OFF
- Overshoot mode
- Slope mode (0 to 30 s)

Control mode

- Local
- RS 232 (baud rate, adjustable parity...)
- RS 485 (address, baud rate, adjustable parity...)
- Analog

Control of reflected power

- Adjustable from 0 to 100 % of forward power if generator with isolator
- Disjunction mode or limit mode of forward power (sound signal)

Timer

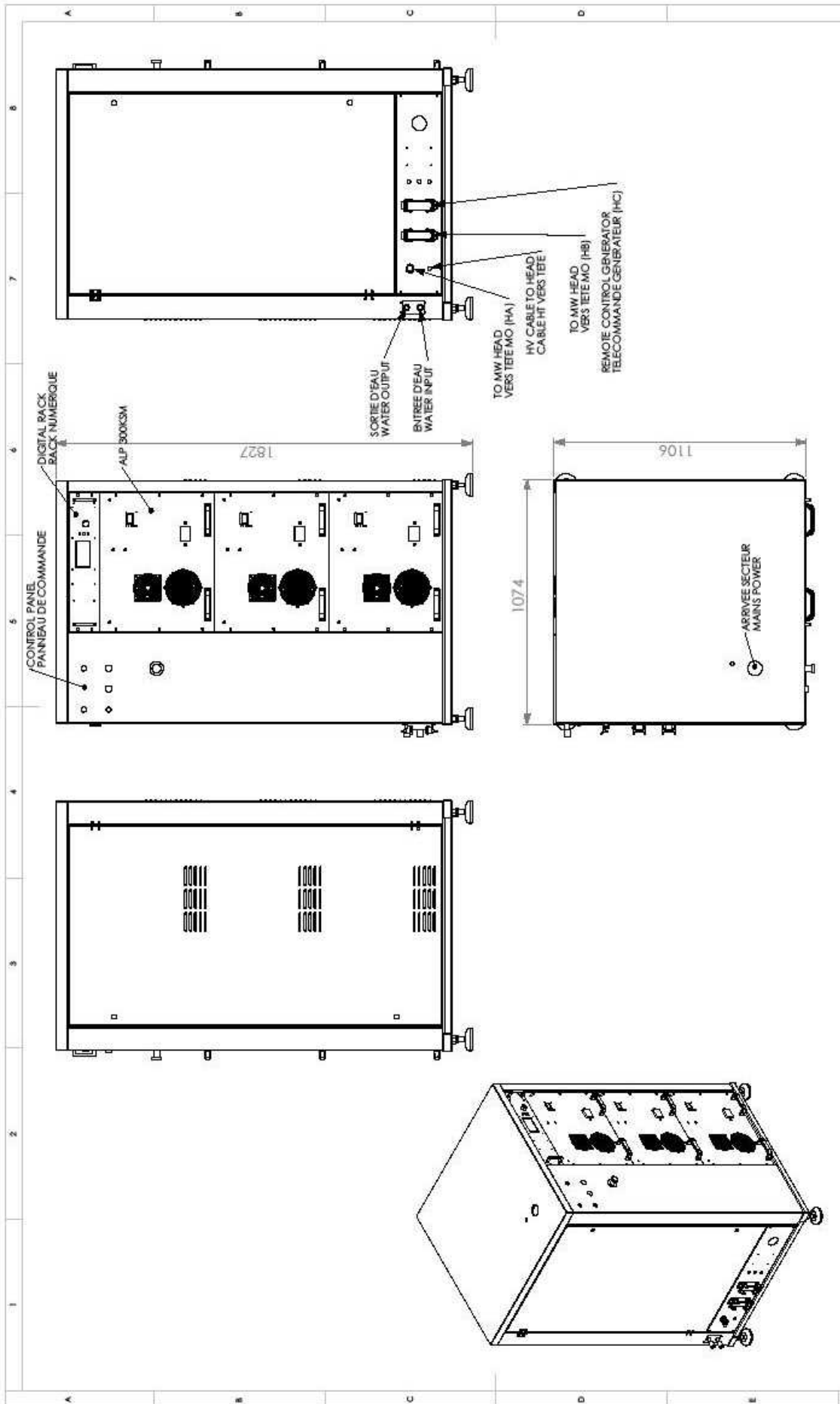
- If ON, adjustable from 1 s to 24 h
- Stop mode: re-start of timer after a microwave stop
- Pause mode: pause of timer during a microwave stop

Configuration

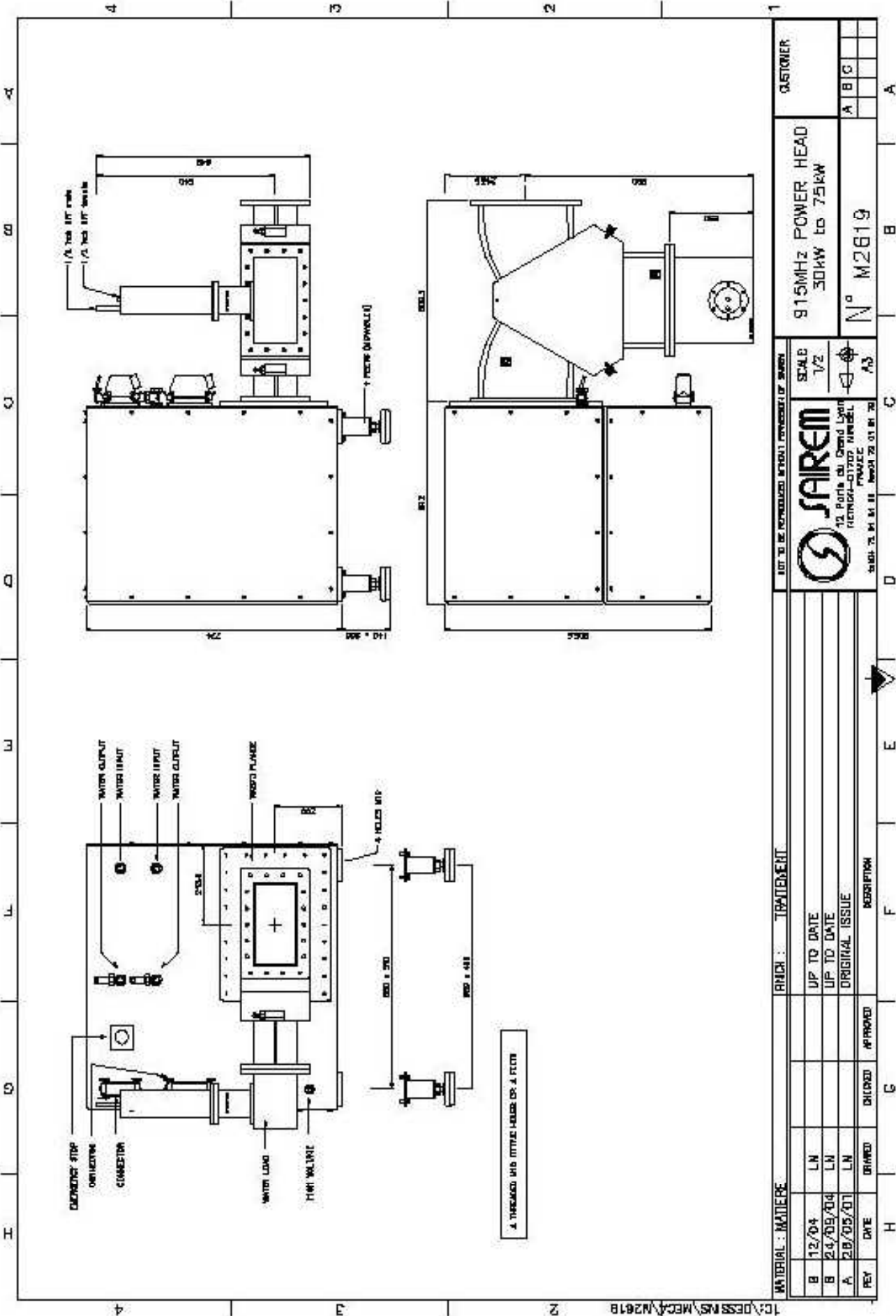
- Preset and load configuration
- Language (English or French)

Others

- Contrast adjustment
- Fault list
- Filament hour counter
- PIN code (if restricted access)



MATERIE :		Traitement :		REF PRODUCTION INTERDITE - DROITS RESERVES		GLP 750 KSM/NUM		INDEXE DU DOCUMENT	
A		17/09/07		ML		A3		3232-ens general	
INDICE		DATE		DESSINE		VERIFIE		APPROUVE	
								EMISSION ORIGINALE	
								MODIFICATION DU DESSIN	
								SCHELE : 1:20	
								WEIGHT:	
								SAIREM	
								12, Porte du GRAND LYON	
								93100 NOGENT SUR OISE	
								FRANCE	
								Tel: 04 72 01 81 60 Fax: 04 72 01 81 79	



T:\DESS\NS\MECA\N2618

REV	DATE	DRAWN	DICHOY	APPROVED	DESCRIPTION
B	12/04	LN			
B	24/09/04	LN			
A	28/05/07	LN			

MATERIAL : MATIERE					
FINCH : TRATTEMENT					
UP TO DATE					
UP TO DATE					
ORIGINAL ISSUE					

SAIREM
12, Porte du Grand Lyon
69632 CHAPONNAIS FRANCE
Tél. 04 72 01 81 66 Fax 04 72 01 81 70

DIT TO BE REPRODUCED WITHOUT PERMISSION OF SAIREM

SCALE: 1/2

N° M2619

CUSTOMER		
915MHz POWER HEAD 30kW to 75kW		
A	B	C