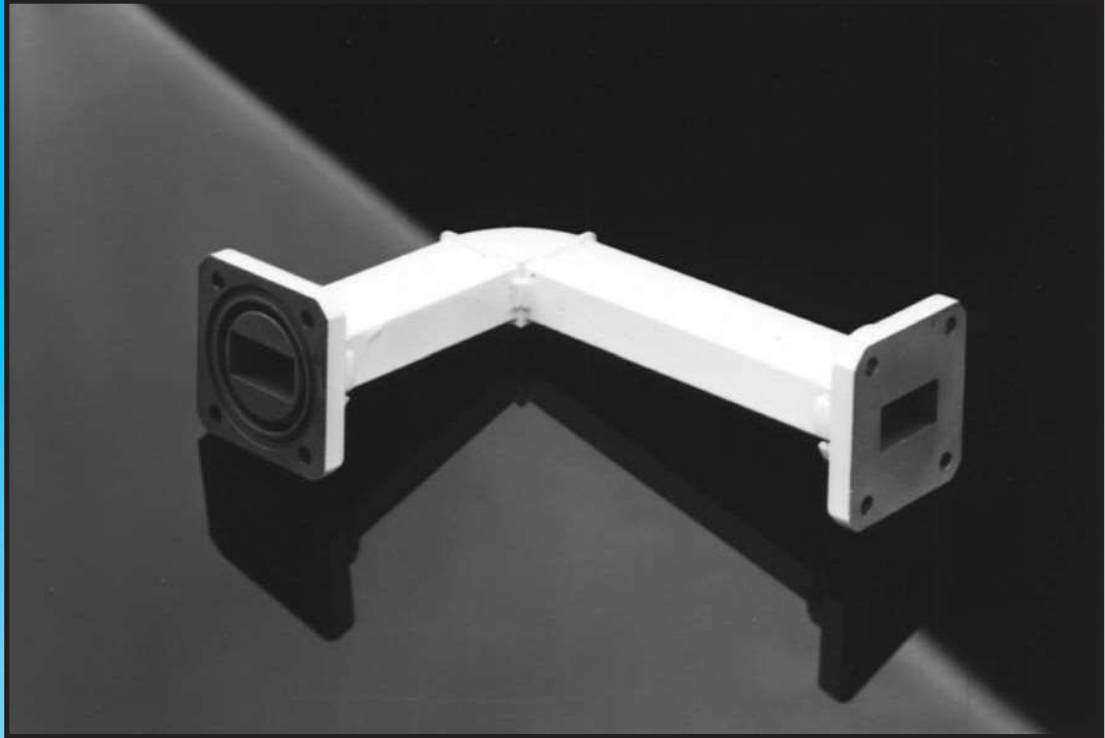


BENDS - MITRE E & H PLANE



H-plane bend shown

PENN ENGINEERING will build mitre bend assemblies to your dimensions and specifications. Specify "E" or "H" plane bend, leg length, and flange type, and you have a custom bend to fit into your waveguide system.

Typical VSWR for mitred bend assemblies is 1.05:1 over the full frequency range.

Brass/Bronze bends are Silver Plated per QQ-S-365D Class A, Aluminum Bends are Chem-Filmed per MIL-C-5541E, and both are finished with PENN ENGINEERING'S Polyurethane Blue Paint.

PENN ENGINEERING COMPONENTS

12750 RAYMER ST.
N. HOLLYWOOD
CALIFORNIA 91605

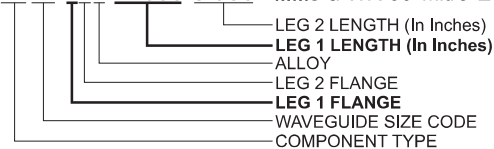
(818) 503-1511

FAX (818) 764-0195

www.pennengineering.com

ORDERING INFORMATION - TO ORDER, USE THE FOLLOWING EXAMPLE:

MODEL 2442-12B12.600-3.956Is a WR-90 Mitre E-plane with cover/choke flanges in bronze



ALLOY: A=ALUMINUM B=BRASS C=COPPER S=SILVER SS=STAINLESS STEEL
FLANGE: 1=COVER 2=CHOKE 3=CMR 4=CPRG 5=CPRF

(See last page for complete list of flanges and materials)

PENN ENGINEERING COMPONENTS

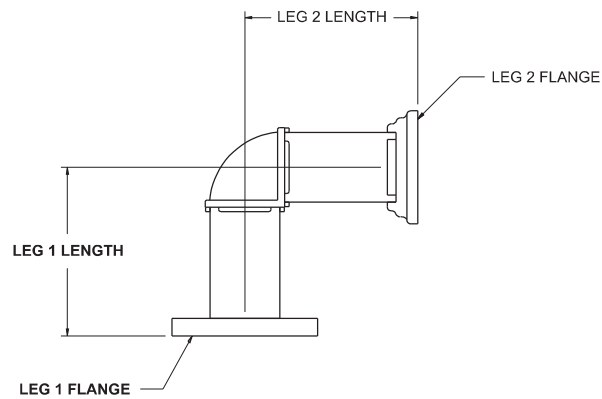
12750 RAYMER ST.
N. HOLLYWOOD
CALIFORNIA 91605

(818) 503-1511

FAX (818) 764-0195

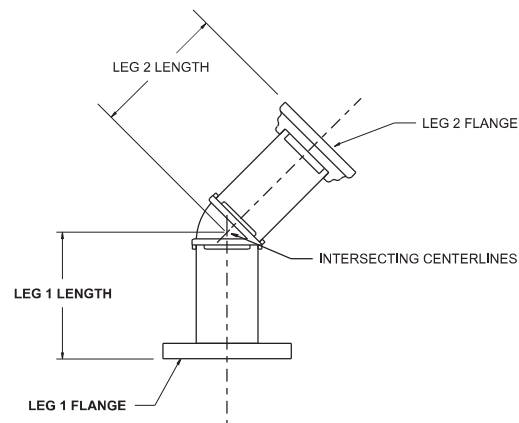
www.pennengineering.com

MITERED BEND 90°



90 Degree "E" Plane Model #	90 Degree "H" plane Model #	Waveguide EIA	Frequency Range (GHz)
2456	2556	WR 284	2.60-3.95
2454	2554	WR 229	3.30-4.90
2452	2552	WR 187	3.95-5.85
2450	2550	WR 159	4.90-7.05
2448	2548	WR 137	5.85-8.20
2446	2546	WR 112	7.05-10.0
2444	2544	WR 102	7.00-11.0
2442	2542	WR 90	8.20-12.4
2440	2540	WR 75	10.0-15.0
2438	2538	WR 62	12.4-18.0
2436	2536	WR 51	15.0-22.0
2434	2534	WR 42	18.0-26.5
2430	2530	WR 28	26.5-40.0

MITERED BEND 45°



90 Degree "E" Plane Model #	90 Degree "H" plane Model #	Waveguide EIA	Frequency Range (GHz)
2656	2756	WR 284	2.60-3.95
2654	2754	WR 229	3.30-4.90
2652	2752	WR 187	3.95-5.85
2650	2750	WR 159	4.90-7.05
2648	2748	WR 137	5.85-8.20
2646	2746	WR 112	7.05-10.0
2644	2744	WR 102	7.00-11.0
2642	2742	WR 90	8.20-12.4
2640	2740	WR 75	10.0-15.0
2638	2738	WR 62	12.4-18.0
2636	2736	WR 51	15.0-22.0
2634	2734	WR 42	18.0-26.5
2630	2730	WR 28	26.5-40.0